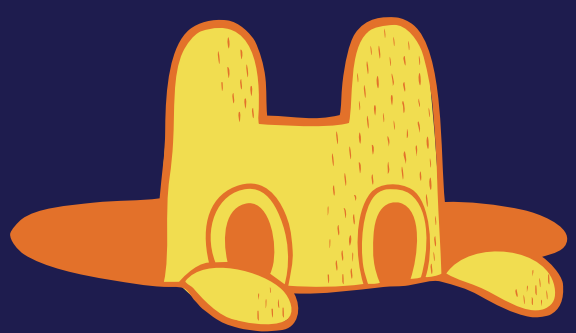




I'm Kevin.
I was a
drop out.



Nobody would believe
I'm now majoring in pharmacy
at ASU.



My Name is
Selena.
Many obstacles try to
crush my dreams.



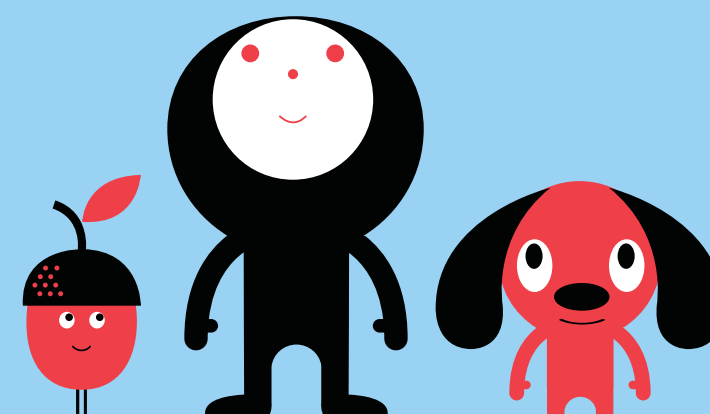
I'm also the
first female
president
of my high school Robotics Club.



I go by
Adrion.
I used to cause
problems.



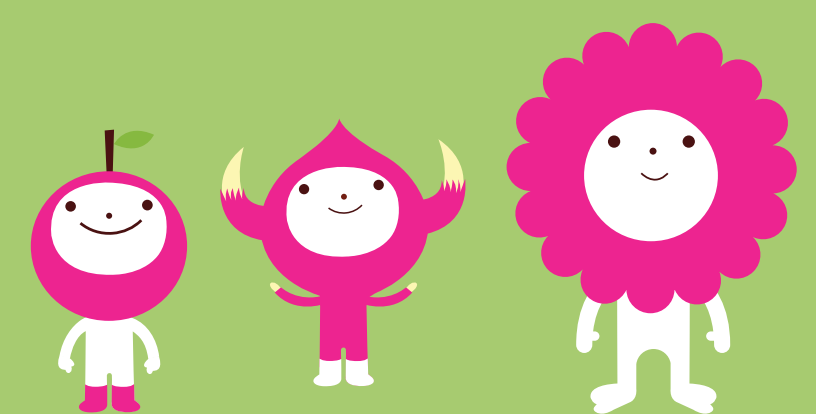
now I'm
solving
them.



They call me
Regina.
I felt
helpless
and angry
about poverty.



Now I help provide clean water
to 150,000
people in Sudan.



SVPAZ has invested
\$3.2 million
to date,



The most profitable investments are made early so that they may yield a lifetime of rewards. For every boy and girl SVPAZ can help to rise above their circumstances, the positive impact on our community is multiplied through the lives these young people will touch. The four examples on these pages are just a few of the stories we've been able to help write with our nonprofit work this year. Whether it's getting counseling for an angry young boy, helping at-risk kids graduate from high school or providing students with an opportunity to improve their world, our unique, entrepreneurial model continues to make a fruitful difference. In helping to create successful, independent nonprofits, we're creating scores of successful, independent young people who might not otherwise have the chance to prove their worth to themselves or their community.

Read our four stories of success at SvpAz.org/stories

In 2009, we continued to live our mission of strengthening the local nonprofit community while fostering effective philanthropists. We invested \$200,000 in seven nonprofits/initiatives, and then backed up that investment with over 2,000 hours of voluntary service. Our individual and referral cash/in-kind donations helped leverage our grants by \$212,550 to achieve a total overall investment of \$412,550! In addition, our partners continue to give their time, talents and individual contributions to our investee alumni. Last year, that assistance was valued at \$205,150. Our monetary investment in the Phoenix community now totals \$3.28 million in 37 different nonprofits.

Lastly, we're very proud of the 18 educational programs we were able to offer to our partners and investees. These opportunities will help create strategic philanthropists, stronger nonprofits and more rewarding stories of lives transformed through our efforts.



which has benefited
thousands of
children.

Our Mission

Social Venture Partners uses a venture capital approach to catalyze significant, long-term positive social change in our community by:

Educating individuals to be well informed, effective and engaged philanthropists.

Investing time, expertise, and money in innovative nonprofits to collaboratively strengthen their organizations.

Guiding Principles

Engaged Partner Philanthropy Entrepreneurial Spirit Philanthropic Education
Community and Collaborative Action Mutual Respect Accountability & Results

2009 SVP Staff

Terri Wogan, Executive Director
Julie Cox, Director of Operations and Grants
Becca Mandel, Communications Associate/AmeriCorps*VISTA

Contact Us

Social Venture Partners Arizona
1505 E. Missouri Ave, Suite 200
Phoenix, AZ 85014
tel: 602.224.0041
e: info@svpaz.org
web: www.svpaz.org

Board Members

Dan Rigby, *ECA Companies* (Retired) – Chair
Mary Sculley – Vice Chair of Operations
Alison Lewis, *Carlisle Collection* – Vice Chair of Partnership Development
Harold Dorenbecher, *Phoenix Northern Trust, N.A.* – Vice Chair of Finance
Diane Walker, *Aid To Adoption of Special Kids* – Vice Chair of Investments
Hope Leibsohn, *Lewis & Roca, LLP* – Secretary
Maurine E. Karabatsos, *Empire West Title Agency* – Member at Large
Grace Lau, *PacWest Financial Management, Inc.* – Member at Large
Carol Cox, *PetSmart* (Retired)
John DeWulf, *Roshka, DeWulf & Patten PLC*
Donna Killoughy, *JD, Society of St. Vincent de Paul*
Mindy Korth, *CB Richard Ellis*
Duane Miller
Bill Nord, *Wells Fargo* (Retired)
Richard Tollefson, Jr., *The Phoenix Philanthropy Group*
Dominic Wycklendl, *Phoenix Northern Trust, N.A.*



2009 SVP Teens

Sophie Loeb Nick Perez Ashley Ballejos Hayden Black Lauren Casillas Dakota Couture
Kristin Couture Sarah Harris Sean Harris Isabel Hines Gina Johnson Anna Legé
Chanel Leibsohn Amanda Nickels Jasmine Sims Joslyn Sims Jamin Sims Morgan Shepard
Katie Shook Kristine Shook Krista Somsan Eric Stucky Sarah Sullivan Ben Waitkus Megan Ward

The SVP Teens program teaches young people that they have the power to create social change. The teens experience hands-on philanthropy by focusing on an issue facing the community, raising their own funds, and then going through the grant-making process. This year, they awarded \$3,000 to Ear Candy Productions for after-school music opportunities and \$3,000 to Project LEAD at Heard Elementary School for program supplies and materials.

2009 SVP Partners

Jerry Appell, *Weight Watchers of Arizona, Inc.*
Jim & Jo-Ann Armstrong, *KIITA Foundation*
Patrick & Amy Armstrong, *KIITA Foundation*
Deb Carstens, *Gunslinger Political Consulting, LLC*
Joe Cattaneo, *A&C Properties*
Tom Chauncey II, Esq., *Gust Rosenfeld*
Michael Chesin, *Helios Education Foundation*
Brenda Church, *Frazier Ryan Goldberg & Arnold LLP*
John Clemency & Carol Bracken Clemency, *Gallagher & Kennedy*
Carol Cox, *PetSmart (Retired)*
Connie Cravens
Peter & Sherianne Davis, *Simon Consulting, LLC*
John & Kris DeWulf, *Roshka, DeWulf & Patten, PLC*
Harold & Mary Dorenbecher, *Phoenix Northern Trust, N.A.*
Margaret Dunn, *Dunn Transportation*
John Dwyer, *Empire West Title Agency*
Carl & Eunice Feinberg
Scott Finical & Sarah Strunk, *Fennemore Craig PC*
Joe & Joyce Friel, *Peak Performance Consulting*
Gerald & Kathy Gaines, *Gaines Foundation*
Amy Giltner, *Jackson Lewis, LLP*
John & Barbara Glass, *Glass Financial Group, Inc.*
& Barbara Greiner Glass and Associates, Inc.
Bob Hall & Marcia Busching, *Orenda International & Highline Properties, LLC*
Lawrence & Karen Harris, *Jefferson Wells Intl. & Camelback Safaris, Protravel, Inc.*
Judd R. Herberger
Debbie Hill, *Osborn Maledon*
Jerry Hirsch, *Jaren Corporation*
Sandy & Beth Hoffman
Tom & Ruth Ann Hornaday, *Hornaday Development, LLC*
Dave Howell, *Wells Fargo*
Park & Michele Howell, *Park&Co*
Gary Jaburg & Susan Donaldson, *Jaburg & Wilk P.C.*
Tim & Robin Kaehr, *DMB Associates, Inc.*
Maurine E. Karabatsos, *Empire West Title Agency*
Marc Kellenberger & Richard L. Tollefson, Jr.
Arizona's Children Association & The Phoenix Philanthropy Group
Donna Killoughy, *JD, Society of St. Vincent de Paul*
Virginia Korte, *STARS*
Mindy Korth, *CB Richard Ellis*
Craig Krumwiede & Alison Lewis, *Harvard Investments & Carlisle Collection*
Grace Lau & Charles Tsui, *Pac West Financial Management, Inc. & Asian Business League*
Lori Lazard, *Russ Lyon Realty*
Hope & Steven Leibsohn, *Lewis and Roca, LLP & SBC Enterprises LLC*
Marsha Leonard, *Harris Private Bank*
Jack & Lynn Londen, *Londen Land Company, LLC*
Paul & Vicki Lustig
Vance & Nancy Marshall, *VJ Properties, Inc.*
Ann & Michael McCartney, *Keystone Commercial Capital*
Jim & Joanne McDowell, *AAA Arizona (Retired)*
Duane & MaryAnn Miller
Wendell & Barbara Montandon, *Montandon Farley*
James & Jean Morgan
J. Jahm Najafi, *Najafi Companies*
Richard & Elaine Morrison, *CW and Modene Neely Charitable Foundation*
Bill & Kathy Nord, *Wells Fargo (Retired)*
Jack Rasor, *WDP Partners, LLC*
Carole L. Rayes, *Harris Private Bank*
Scott Rehorn, *RED Development*
Dan & Ann Rigby, *ECA Companies (Retired)*
Rob Risley, *Freeport-McMoran Copper & Gold*
Eileen Rogers, *Allegra Print & Imaging*
Judy Schumacher, *SCF Arizona*
Pat & Mary Sculley
Jack Selby, *Clarium Capital Management*
Richard & Vera Shaw, *Transactions Strategies, LTD.*
Mark Shook, *Innovative Brands*
David & Marie Smoot, *NATAWA Corp.*
John L. Strittmatter & Patricia Gansor, *Ryan Companies US, Inc.*
Scott & CJ Theobald, *Theobald Law, PLC*
Mary Thomson, *BHHS Legacy Foundation*
Dr. Robert & Naomi Waldman
Diane Walker, *Aid to Adoption of Special Kids*
Jonas Weil, *Solarscape Energy, LLC*
Rick & Teresa West, *Carefree Partners*
Trevor & Meghan Wilde, *Wilde Wealth Management Group, Inc.*
Dick & Gretchen Wilson, *Wilson Investment Co. & Gretchen Wilson Interiors*
Gerald Wissink, *BHHS Legacy Foundation*
Dominic & Barbara Wycklendl, *Phoenix Northern Trust, N.A.*
Barry & Barbara Zemel, *Prizm Investment*
Ed Zito, *Alliance Bank of Arizona*

2009 SVP Investees

All Star Kinds Tutoring
Back to School Clothing Drive
Center for Teacher Success (formerly AFRE)
Communities in Schools of Arizona
New Global Citizens
Phoenix Day
Rodel Exemplary Principal Initiatives
Si Se Puede Foundation



The Bashes Social Entrepreneurs of the Year

Eddie and Nadine Basha were the 2009 Social Entrepreneurs of the Year at the SVP Arizona 10 Year Anniversary Spring Partner Meeting. The Bashes have dedicated much of their time to making Arizona a better place to live for kids, and their advocacy for children is legendary. They have long been associated with the drive for excellence in education in Arizona, contributing leadership, time and financial support throughout the state.



The Armstrongs 2009 Partner Profile

Our first year with SVP has been educational, inspirational and fun. After living in Colorado for ten years, we moved back to Arizona in 2008. It's nice to be home after so long and to get involved with the community we grew up in. We chose to join SVP to continue the amazing work that Patrick's parents have done as partners over the years. They truly instilled a great sense of service, generosity and sharing in their family, and we feel that it's not only our responsibility but our honor to continue on that path.

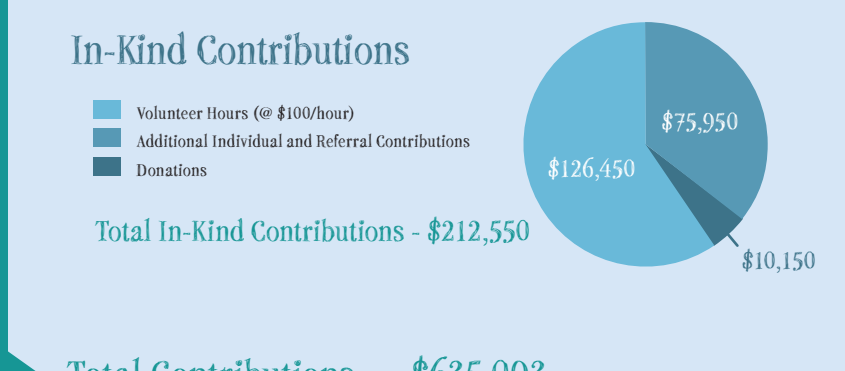
We began by serving on the New Partner Committee, where we learned and followed the important steps in researching, visiting and selecting a one-time SVP grant recipient. This experience opened our eyes to the moving stories of small nonprofits in our community and the due diligence needed to evaluate them. The committee selected The Genesis Academy, which impressed us with their commitment to giving their students a chance at an education. We were struck by their organization and their director's ability to handle the students. We watched her enter a classroom, spot a student sneaking a listen on his iPod, and promptly confiscate it. We appreciated her dedication to not let anything stand in the way of that child's education.

That initial experience really allowed us to get our feet wet. Patrick joined the Critical Issues Affinity Group in seeking out the next great investee. In this trying economic time for our nation, these meetings are proving to be both enlightening and impactful.

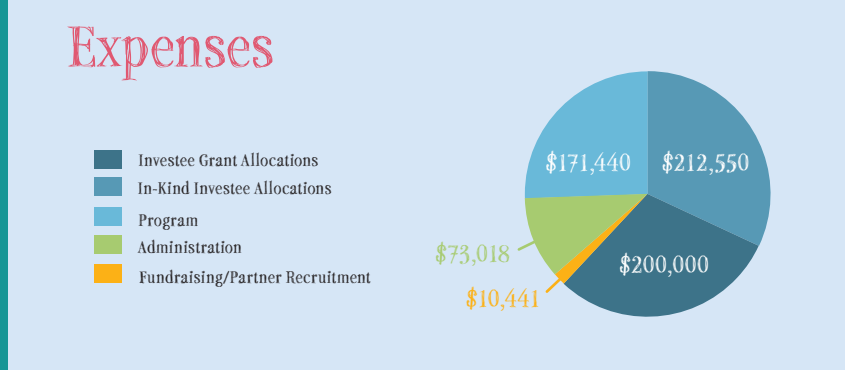
We are also passionate about continuing the generational sense of philanthropy and introducing, educating and involving the Gen X's, Gen Y's and Millennials. Amy has joined the Partner Development Committee with the goal of bringing the next generation of partners into action while maintaining current member involvement.

SVP has been a wonderful fit for us. We've been able to put our skills to work for the partnership and are anxious to apply them within the investees. It has also been a fantastic opportunity to meet and become friends with people who have similar values, backgrounds and dedication.

Financial Data

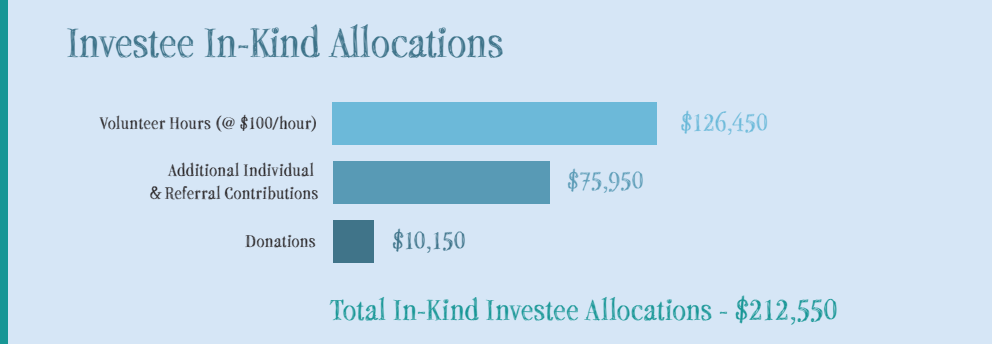
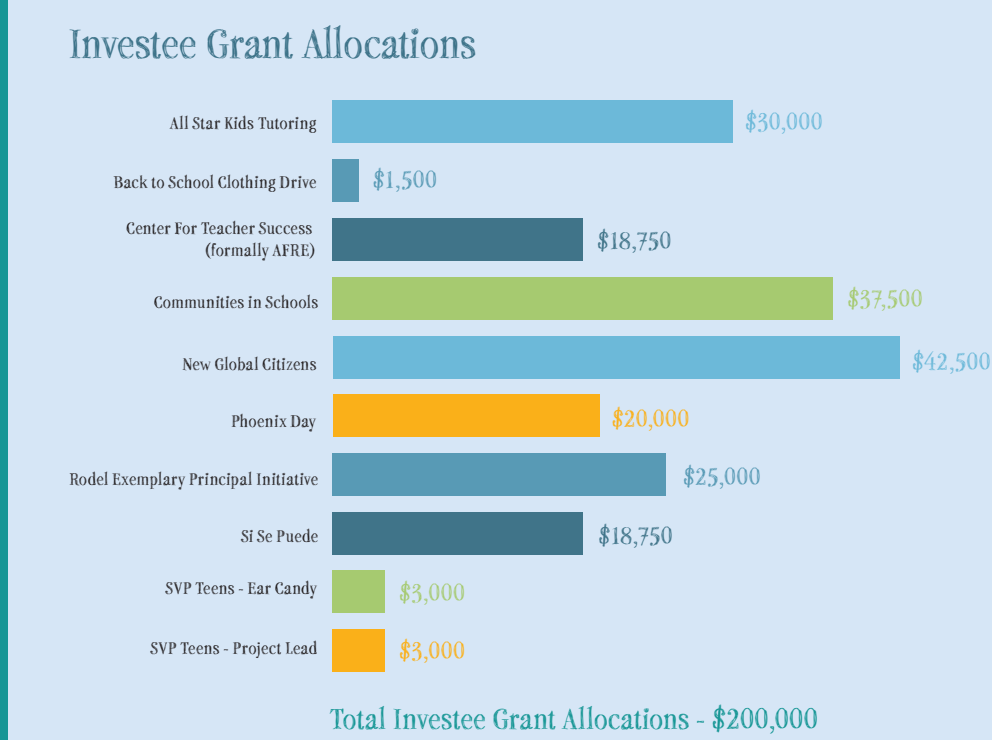


Total Contributions — \$635,093



Total Expenses — \$667,449

Allocations

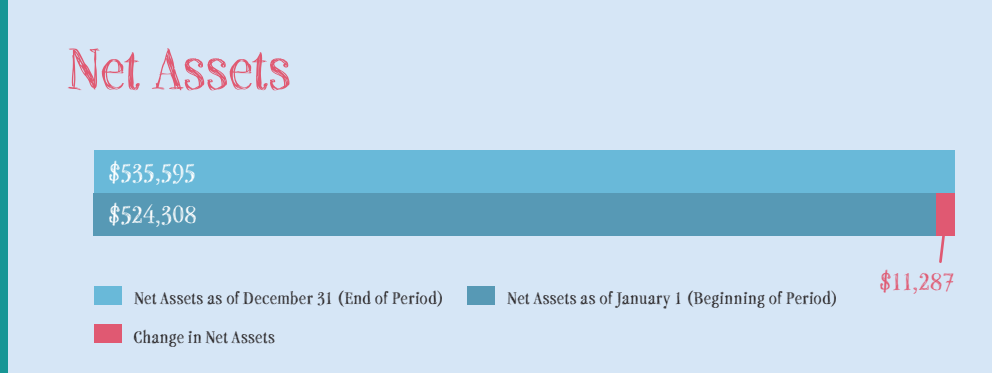


Total Value of Investee Allocations — \$412,550

Partner Education / Enrichment



Total Value — Priceless

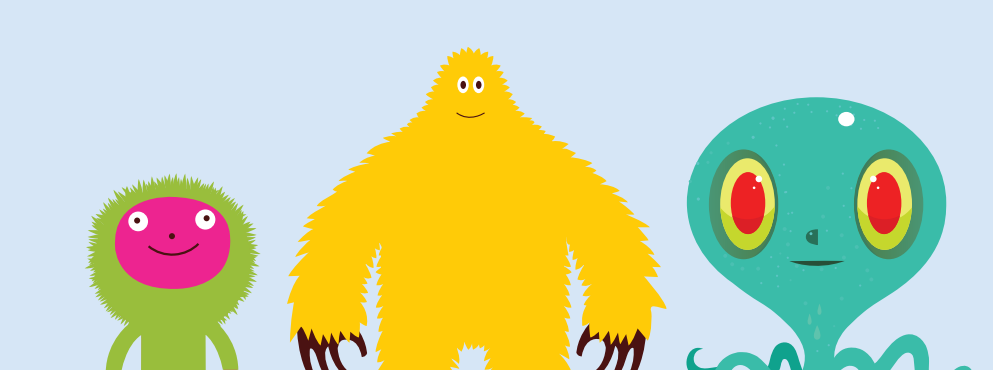


SVPi Social Venture Partners Arizona is a proud affiliate of Social Venture Partners International.
Design Courtesy of Park&Co. Printing Courtesy of Ironwood Lithography.

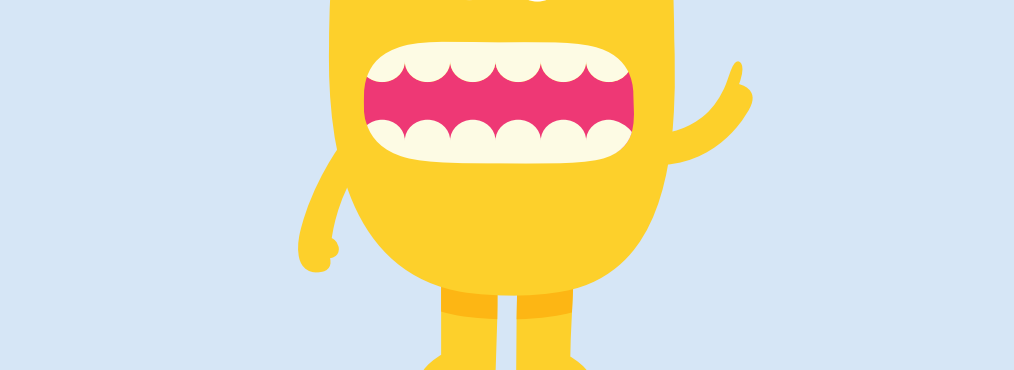


About Face.

The greatest gift we can give is to help our young people overcome obstacles and move in positive new directions. Open these panels and let the faces and figures of 2009 reveal how our investments in children and education are paying off.



When we help a child



achieve their potential,



a whole new life unfolds.

